



Rashtriya Aarogya Nyaya Sanshodhan Sanstha
NOOTAN HOMOEOPATHIC MEDICAL COLLEGE AND HOSPITAL
(Recognized By NCH, New Delhi & Affiliated to MUHS, NASHIK)
Narsinhaon (Landgewadi), Kavathe Mahankal Dist- Sangli.



Ph : 02341 222738


Email- nootanhch@gmail.com

Date: 13/ 12 / 2023

PART -II HOSPITAL INFRASTRUCTURE POINTS 4

	Hospital Infrastructure as per schedule (IA)	Area	Details on College Website
4	Administration block	60 sq.mt.	Hospital Plan Uploaded
	OPD / IPD details (Refer Annexure – III A)	133.38 sq.mt.	Annexure – III Uploaded
	Operation theatre unit	81.06 sq.mt.	Hospital Plan Uploaded
	Yoga / Physiotherapy rehabilitation unit	43.05 sq.mt.	
	Central Clinical Laboratory	40.87 sq.mt.	
	Radiology and Sonography Section	40.87 sq.mt.	
	Hospital kitchen	20.1 sq.mt.	
	Stores	32.34 sq.mt.	




PRINCIPAL 13/12/2023
Nootan Homoeopathic Medical College & Hospital
Narsinhaon, Kavathe Mahankal
Dist:- Sangli, 416419, Maharashtra

MAHARASHTRA UNIVERSITY OF HEALTH SCIENCES, NASHIK
Homoeopathy Faculty

YEAR 2023 - 2024

Name of College: Nootan Homoeopathic Medical College & Hospital

College Code: 142116

OPD Department

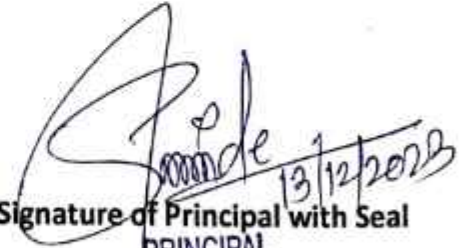
a)	Name of OPD	Yes Available	Not Available	Remarks
	Medicine	Yes Available	-	-
	Paediatrics	Yes Available	-	-
	OBGY	Yes Available	-	-
	Any other Speciality	Yes Available	-	-
b)	Dressing Room	Yes Available	-	-
	Dispensary	Yes Available	-	-
	Store	Yes Available	-	-

IPD Infrastructure details

ANNEXURE- III A (2)

Indoor Patient Department:

Sr. No.	Departments	Beds Required (Including UG and PG)	Total Beds Available	Nursing Station/ Duty Room Y/N	Doctor Room Y/N	Store Room Y/N	Remarks
1.	Gen. Medicine	13	15	Yes Available	Yes Available	Yes Available	-
2.	Peadiatrics	02	03	Yes Available	Yes Available	Yes Available	-
3.	Surgery	05	06	Yes Available	Yes Available	Yes Available	-
4.	OBGY	05	06	Yes Available	Yes Available	Yes Available	-
	Total	25	30	Yes Available	Yes Available	Yes Available	-


Signature of Principal with Seal
PRINCIPAL
 Nootan Homoeopathic Medical College & Hospital
 Narsinhgaon, Kavathe Mahankal
 Dist:- Sangli, 416419, Maharashtra

MAHARASHTRA UNIVERSITY OF HEALTH SCIENCES, NASHIK

Homoeopathy Faculty

DETAILS OF THE HOSPITAL AND WORK RECORD: (HOSPITAL – INFORMATION)

YEAR 2023 - 2024

Name of College: Nootan Homoeopathic Medical College & Hospital

College Code:142116

NUMBER OF PATIENTS ATTENDED IPD (1st Jan. to 31st December)					
Sr. No.	Month	Information to be filled up by college			
		General Medicine	Peadiatrics	OBGY	Surgery or Any other Specialty
1	Jan.	140	52	52	67
2	Feb.	131	33	26	92
3	March	146	41	85	72
4	April	153	46	63	55
5	May	154	40	65	63
6	June	141	47	25	54
7	July	132	23	42	45
8	August	153	29	32	42
9	Sept.	158	15	38	31
10	Oct.	134	25	58	59
11	Nov.	139	30	47	52
12	Dec.	65	24	32	34
Total		1646	408	565	666
Grand Total		3285			
Bed Occupancy (in %)		36%			
FORMULA FOR CALCULATING BED OCCUPANCY					
Bed Occupancy = $\frac{\text{Total No. of Bed days Occupied} \times 100}{\text{Total No. of Beds} \times \text{No. of total days}}$					



Signature of Principal with Seal

Nootan Homoeopathic Medical College & Hospital

Narsinggaon, Kavathe Mahankal

Dist- Sangli, 416419, Maharashtra

MAHARASHTRA UNIVERSITY OF HEALTH SCIENCES, NASHIK

Homoeopathy Faculty

DETAILS OF THE HOSPITAL AND WORK RECORD: (HOSPITAL – INFORMATION)

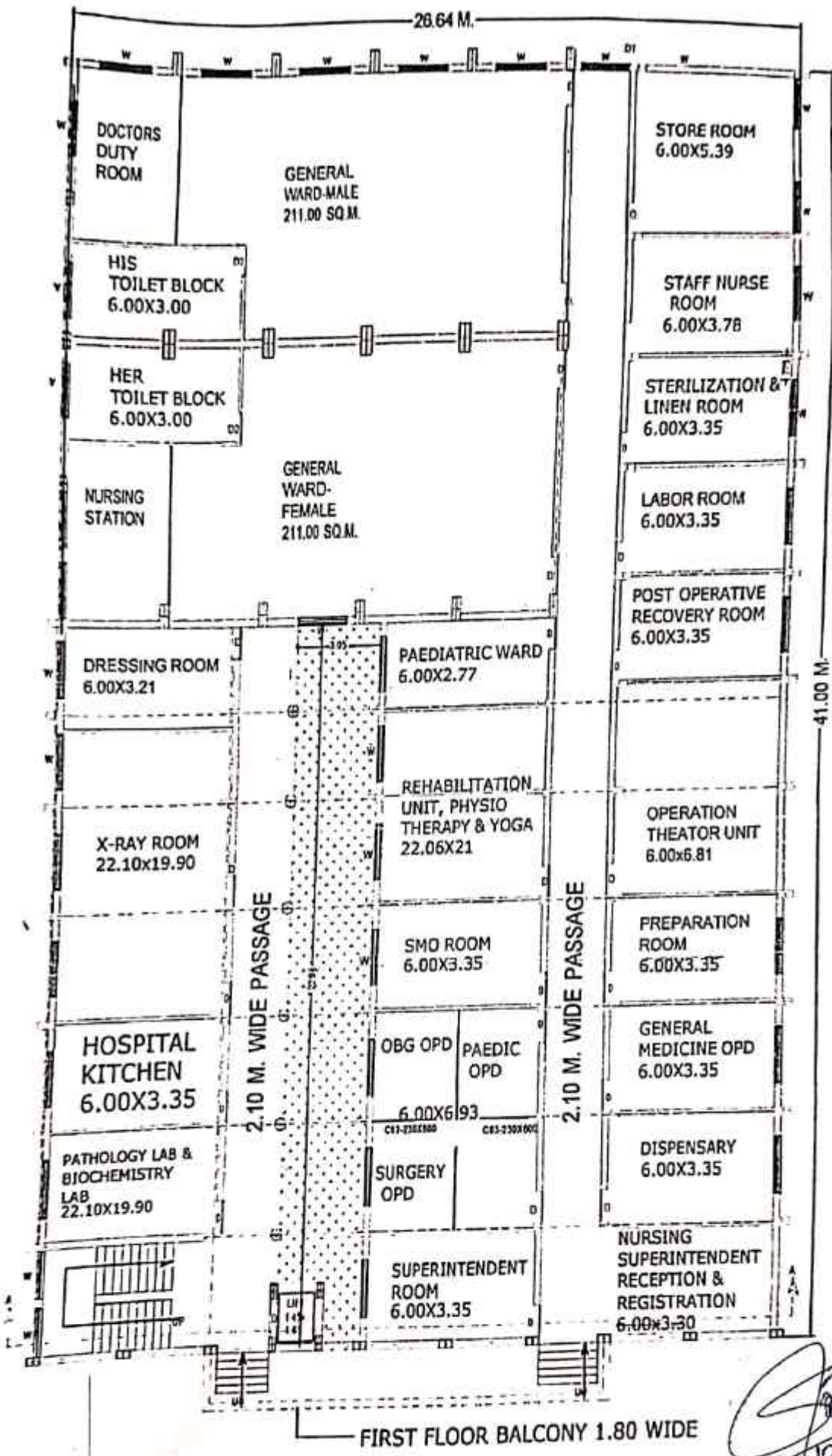
YEAR 2023 - 2024

Name of College: Nootan Homoeopathic Medical College & Hospital

College Code: 142116

NUMBER OF PATIENTS ATTENDED OPD (1st Jan. to 31st December)					
(Note:- Patients of Medical Camp OPD should not be included)					
Sr. No.	Month	Information to be filled up by college			
		General Medicine	Peadiatrics	OBGY	Surgery or Any other Specialty
1	Jan.	1437	694	408	583
2	Feb.	1465	459	521	694
3	March	2089	798	783	834
4	April	2187	761	780	847
5	May	2194	883	898	894
6	June	2167	869	882	876
7	July	1732	871	976	839
8	August	1632	789	438	865
9	Sept.	1368	962	548	698
10	Oct.	1216	624	739	726
11	Nov.	1269	547	654	596
12	Dec.	508	246	271	263
Total		19264	8503	7896	8695
Grand Total		44358			

Signature of Principal with Seal
PRINCIPALNootan Homoeopathic Medical College & Hospital
Narsinggaon, Kavalthe Mahankal
Dist- Sangli, 416419, Maharashtra



GROUND FLOOR PLAN (HOSI)

[Signature]
 13/12/2023
 PRINCIPAL

Nootan Homoeopathic Medical College & Hospta.
 Narsinghaon, Kavathe Mahankal
 Dist- Sangli. 416419, Maharashtra