



Rashtriya Aarogya Nyaya Sanshodhan Sanstha
NOOTAN HOMOEOPATHIC MEDICAL COLLEGE AND HOSPITAL
(Recognized By NCH, New Delhi & Affiliated to MUHS, NASHIK)
Narsinghaon (Landgewadi), Kavathe Mahankal Dist- Sangli.



Ph : 02341 222738

Email- nootanhch@gmail.com

Date: 08/ 03 / 2023

Hospital Infrastructure POINTS 4

	Hospital Infrastructure as per schedule (IA)	Area	Details on College Website
4	Administration block	60 sq.mt.	Hospital Plan Uploaded
	OPD / IPD details (Refer Annexure – III A)	133.38 sq.mt.	Annexure – III Uploaded
	Operation theatre unit	81.06 sq.mt.	Hospital Plan Uploaded
	Yoga / Physiotherapy rehabilitation unit	43.05 sq.mt.	
	Central Clinical Laboratory	40.87 sq.mt.	
	Radiology and Sonography Section	40.87 sq.mt.	
	Hospital kitchen	20.1 sq.mt.	
	Stores	32.34 sq.mt.	

PRINCIPAL

Nootan Homoeopathic Medical College & Hospital,
Narsinghaon, Kavathe Mahankal
Dist- Sangli. 416419, Maharashtra

MAHARASHTRA UNIVERSITY OF HEALTH SCIENCES, NASHIK
Homoeopathy Faculty

YEAR 2022 - 2023

Name of College: Nootan Homoeopathic Medical College & Hospital

College Code:-142116

OPD Department

a)	Name of OPD	Available	Not Available	Remarks
	Medicine	Yes, Available	-	-
	Paediatrics	Yes, Available	-	-
	OBGY	Yes, Available	-	-
	Any other Speciality	Surgery Yes, Available	-	-
b)	Dressing Room	Yes, Available	-	-
	Dispensary	Yes, Available	-	-
	Store	Yes, Available	-	-

IPD Infrastructure details

ANNEXURE- III A (2)

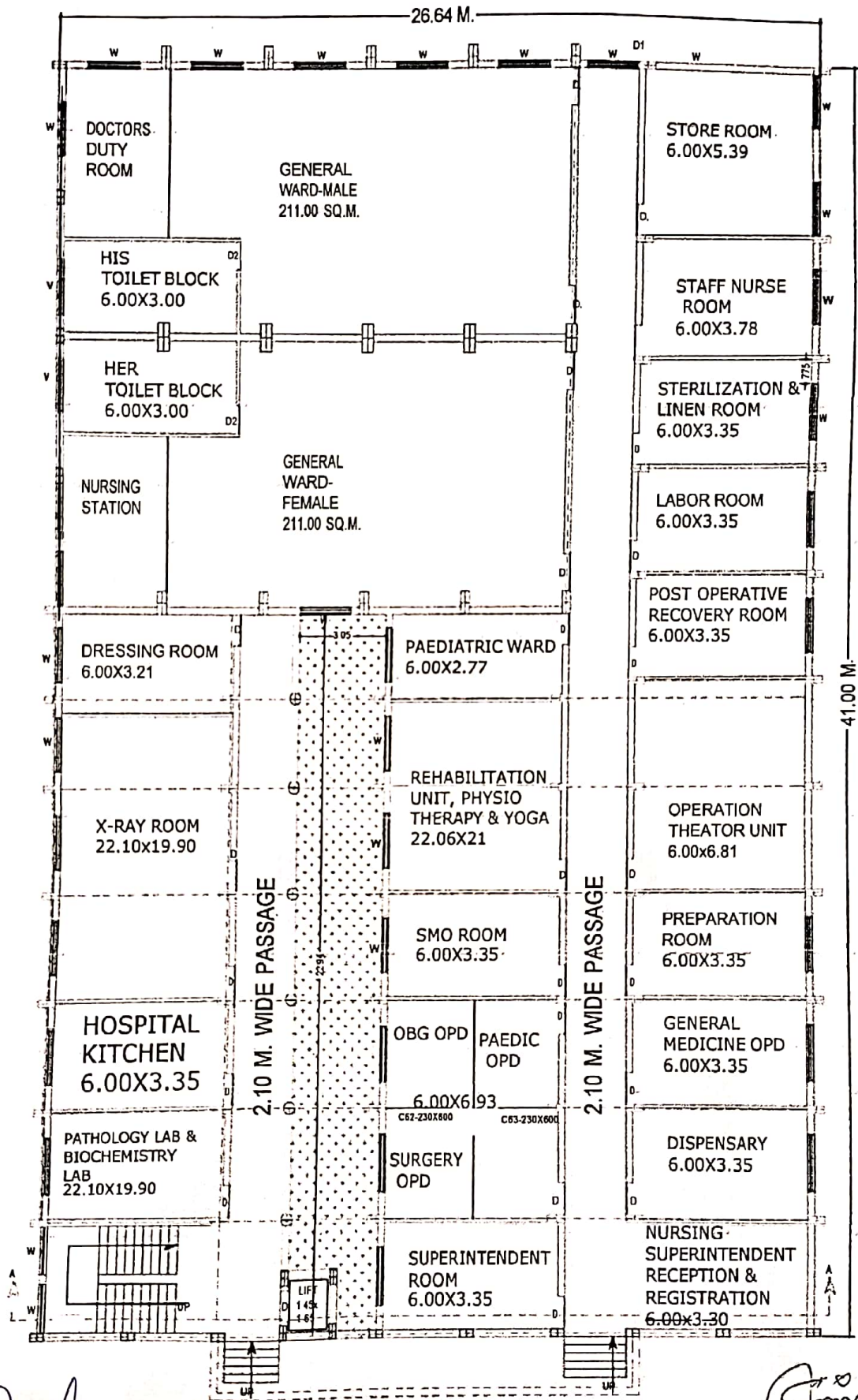
Indoor Patient Department:

Sr. No.	Departments	Beds Required (Including UG and PG)	Total Beds Available	Nursing Station/ Duty Room Y/N	Doctor Room Y/N	Store Room Y/N	Remarks
1.	Gen. Medicine	13	13	Yes	Yes	Yes	-
2.	Peadiatrics	02	02	Yes	Yes	Yes	-
3.	Surgery	05	05	Yes	Yes	Yes	-
4.	OBGY	05	05	Yes	Yes	Yes	-
	Total	25	25	-	-	-	-



Signature of Principal with Seal
6/3/2023

PRINCIPAL
Nootan Homoeopathic Medical College & Hospital
Narsinhgaon, Kavathe Mahankal
Dist- Sangli, 416419, Maharashtra



FIRST FLOOR BALCONY 1.80 WIDE

GROUND FLOOR PLAN (HOSPITAL)

Sande
PRINCIPAL
 Nootan Homoeopathic Medical College & Hospital
 Narsinggaon, Kavathe Mahankal
 Dist- Sangli, 416419, Maharashtra

Sande
PRINCIPAL
 Nootan Homoeopathic Medical College & Hospital
 Narsinggaon, Kavathe Mahankal
 Dist- Sangli, Maharashtra
 Scanned by CamScanner